

R49 BIAS JUMPER RESISTOR

| | |
|---------|-----------|
| 4L6GC | 100V: 27K |
| 6V: 15K | |
| 381 | 100V: 15K |
| 6V: 5K1 | |

TRANSFORMER SPECS

| | |
|---------|----------------|
| HT: | 0V-360V |
| BIAS: | 0V-60V |
| HEATER: | 3.15V-0V-3.15V |
| AUX: | 0V-15V |
| CHOKE: | 3H 100mA |

TARGET VOLTAGES

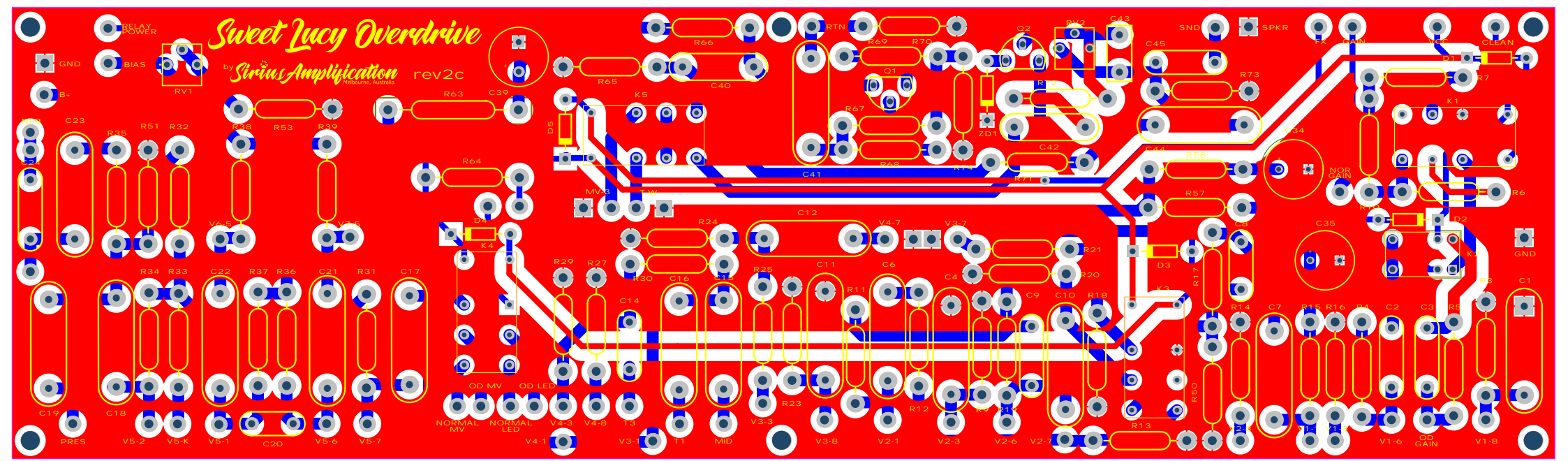
| | |
|------|------|
| B+1: | 492V |
| B+2: | 486V |
| B+3: | 386V |
| B+4: | 365V |
| B+5: | 355V |

| | | |
|--|-------------------------------------|--------------|
| Title: SWEET LUCY OVERDRIVE | | |
| Size: A2 | Number: SIRIUS AMPLIFICATION | Revision: 2c |
| Date: 10/05/2024 | Sheet of 1 | |
| File: C:\Users\... \SWEET LUCY SCH Sch04 | Drawn By: ... | |

Sweet Lucy Overdrive

by Sirius Amplification
Melbourne, Australia

rev2c



VCC AC

BR1

IC1

C38

C37

CHOKE
RETURN

R62

L27

C29

R56

C31

C33

DESIGNED
by *Sinus Application*
Melbourne, Australia

VCC

PREAMP

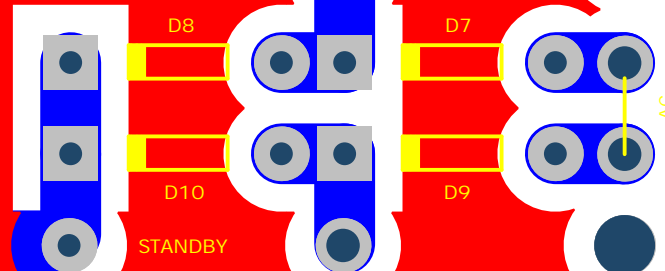
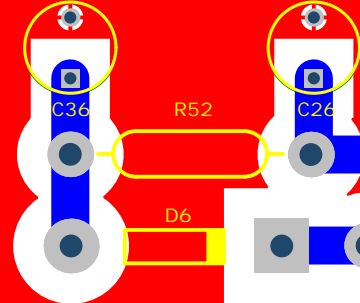
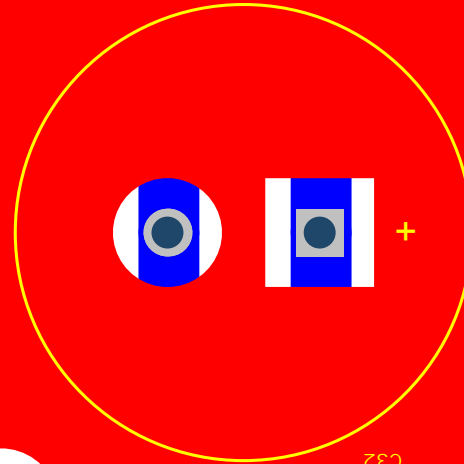
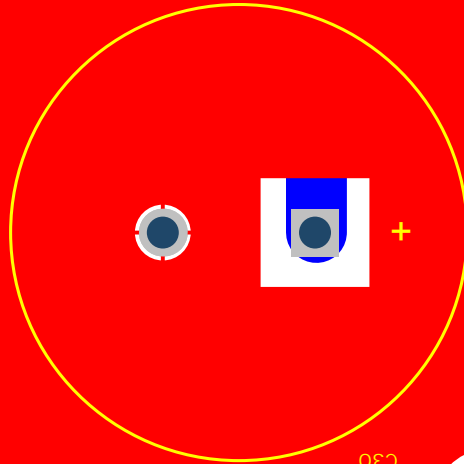
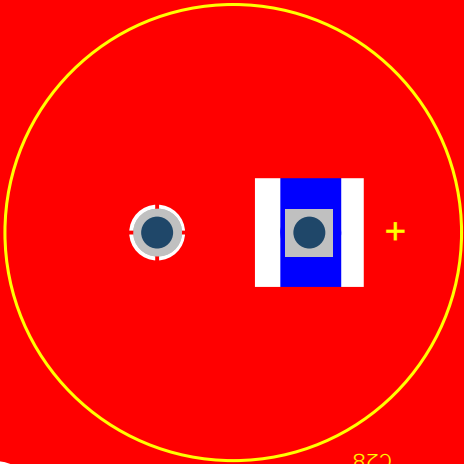
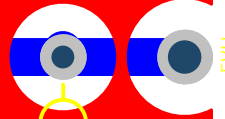
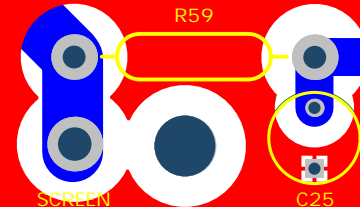
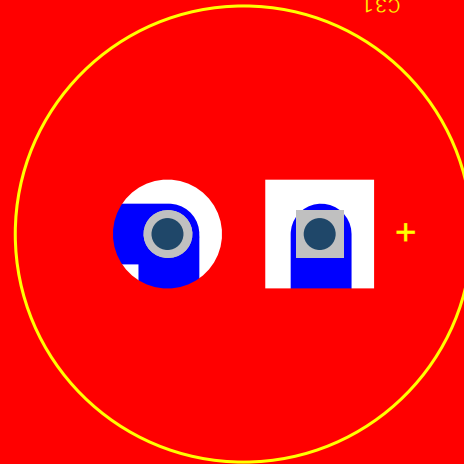
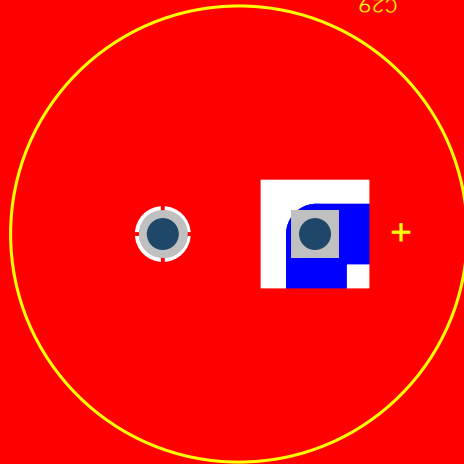
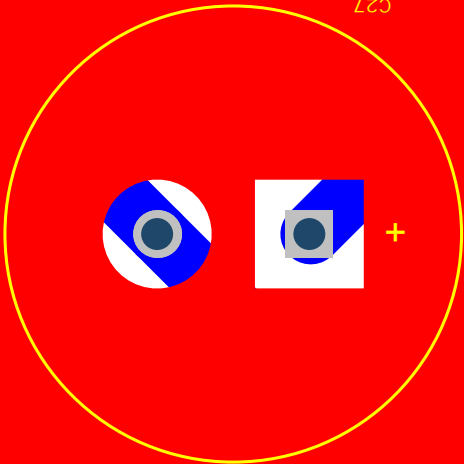
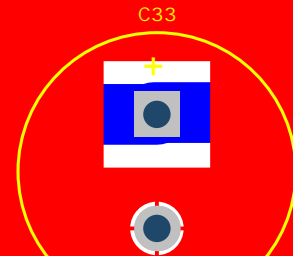
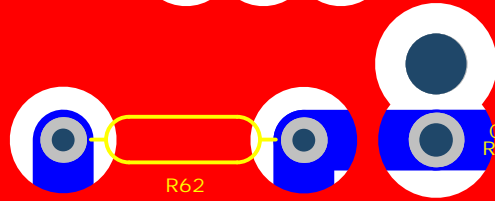
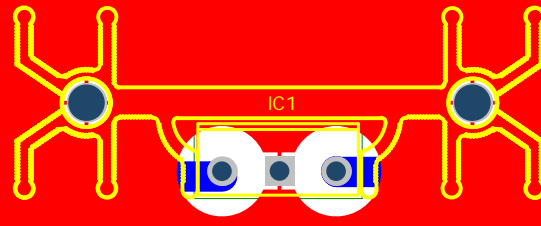
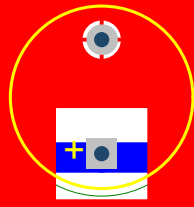
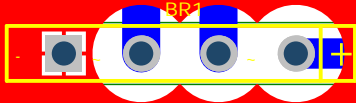
GND

EVH

BIAS OUT

BIAS IN

AC



R61

C28

R55

C30

BR CT

R54

C32

STANDBY

D8

D10

D7

D9